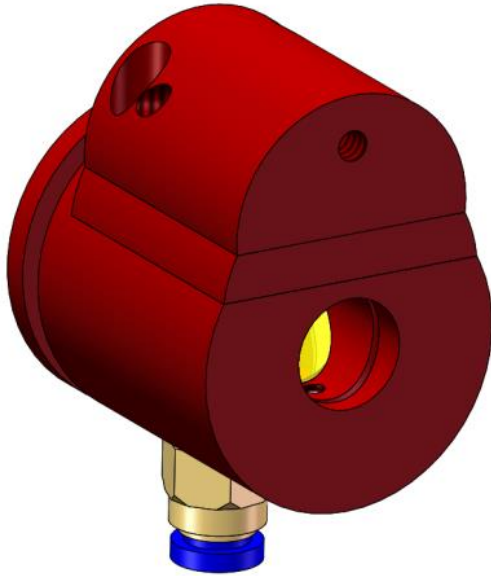
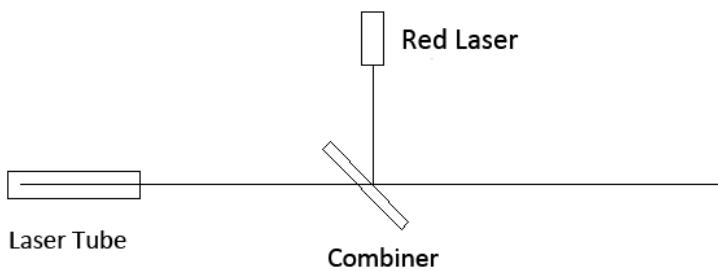


Red Light Indicator User Manual



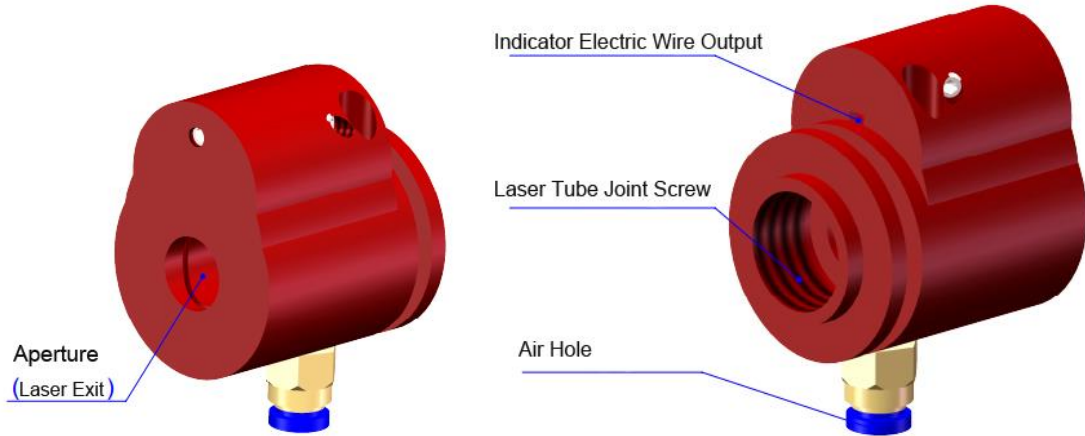
Attention: air blowing can effectively reduce the working temperature and prevent dust from contaminating the lens. Product failure caused by lack of air blowing or insufficient air volume shall be borne by the user

1. Working Principal



PIC. 1

2. Structure Drawing



PIC. 2

Aperture (Laser exit): Exit of laser and indication beam.

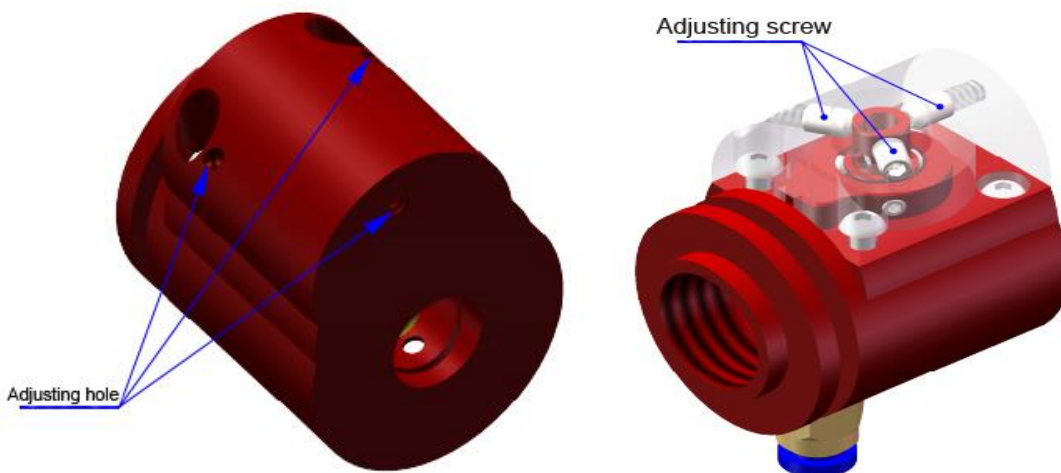
Air Hole: Apply for flexible air tube of $\phi 4\text{mm}$, air flow requirement: 150~450L/Min

Laser tube installation dimension: M18 \times 0.75。

Electric requirements: 4.5~5VDC (Red: Positive. Black: Negative)。

3.Alignment

Indication beam alignment

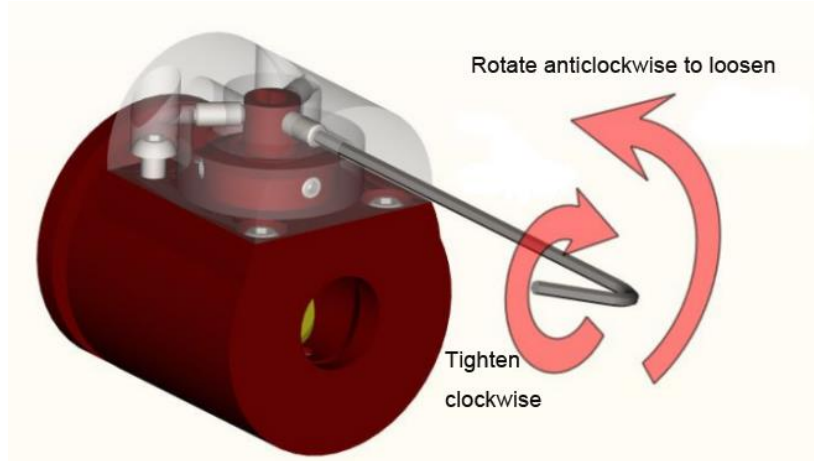


PIC. 3

Place the indicator on laser tube, and rotate laser tube ensure the adjusting hole upwards, like PIC 3

Please take a beam spot at the point 3-4m distance from output of laser tube (depends on your machine working area). Slightly unscrew the adjusting screws to align the indicator position by a 2mm Allen wrench, as show in

Picture 4



PIC. 4

The front adjusts screw to adjust the vertical position; the two side adjusting screw to adjust the horizontal position.

Explanation of adjustment principle

Relying on 3 pieces screws to squeeze the indicator light housing to adjust the angle of the indicator light beam, so that changes indication light indicates the position.

During the aligning, should be to unscrew one or two adjusting screw in advance, then to screw tight other adjusting screws.